



# Hot air heating unit with textile air grill

[www.xvent.cz](http://www.xvent.cz)

 **TACAMA** Sleeve



**Ideal for local heating of industrial halls and warehouses.**

**Heating of greenhouses, sports facilities, workshops and smaller establishments.**

Airflow  
až 4700 m<sup>3</sup>/h

Heat output  
3 - 71 kW

Standard lengths of textile air diffusers  
10 a 15m

Two types of diffusers  
Jets and perforations



**Significant savings of heat costs**

- Heating of the occupied area only
- Possibility to heated specific working areas

**Usage for lower spaces (from 3m)**

- Low out put speed of hot air
- Flooding of the space by hot air

**Quick and easy installation**

- Complete installation material is part of the delivery

**Low weight**

- Does not burden ceiling construction

**Better purchase price**

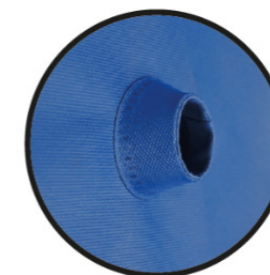
- In comparison with other systems

Textile air diffuser - big advantage of easy installation, cleaning (washing), possibility of printing own logo and promotion.

**DIFFUSERS OPTIONS**

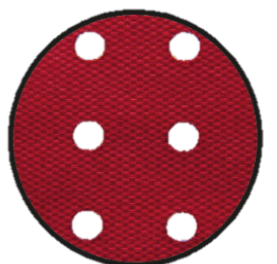
**Diffuser - jets**

Longer air reach of hot air. Installation height 4m and more.

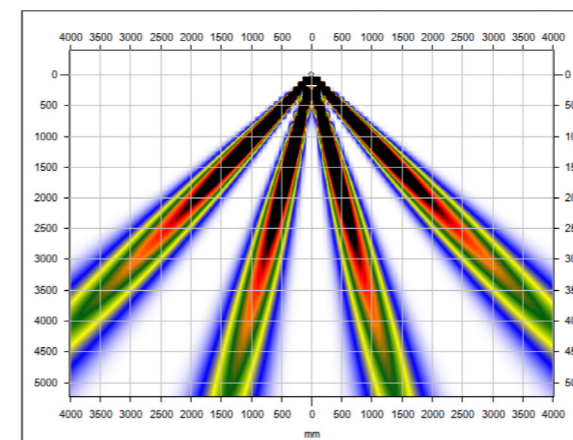


**Diffuser - perforation**

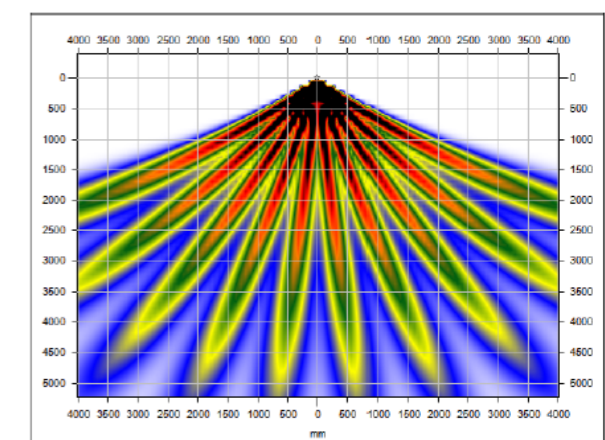
Slower coverage of space by hot air. Installation height from 3m.



Air stream profile

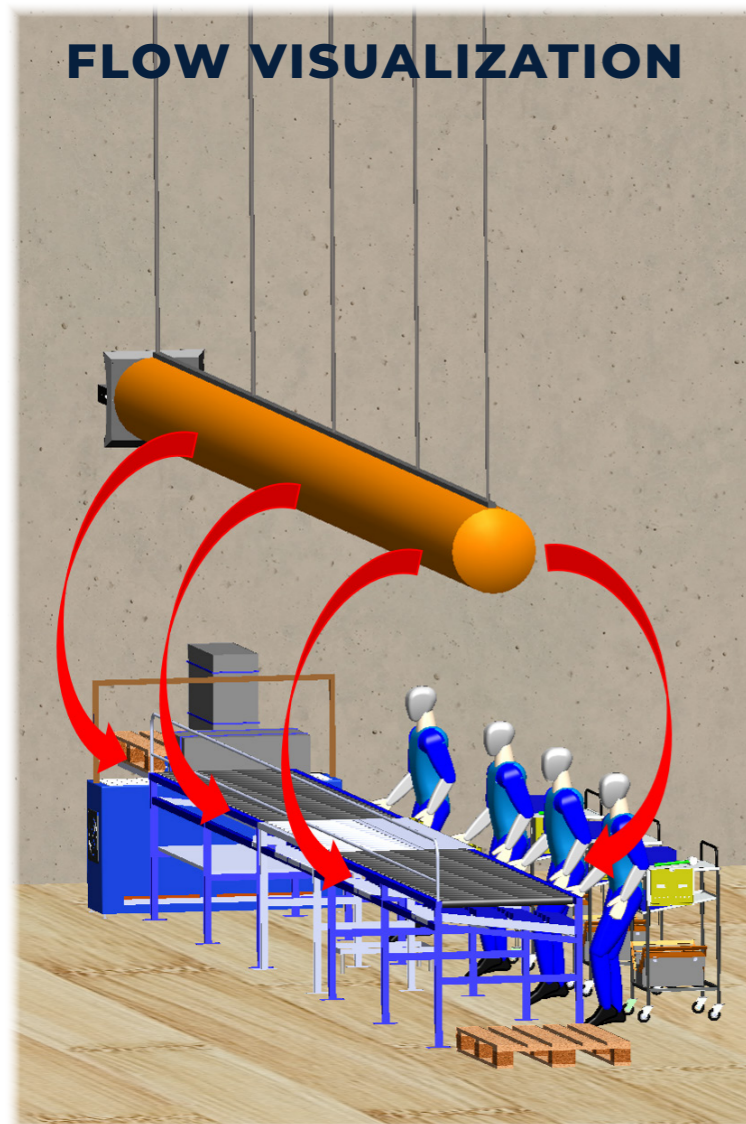
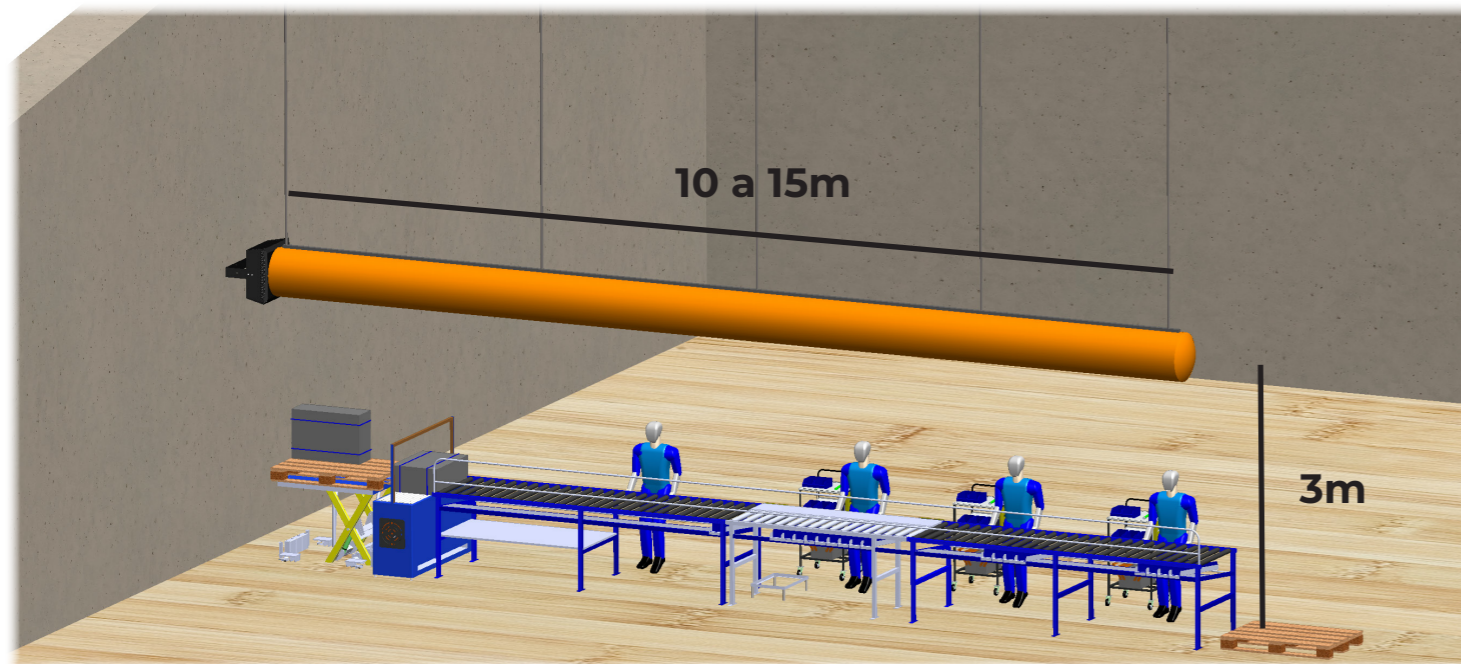


Air stream profile





# TYPICAL INSTALLATION - PRODUCTION LINE



This solution is a combination of a **heating unit Atacama** and **textile diffuser**. Such a combination is simple, while very effective solution of draft-free ventilation.

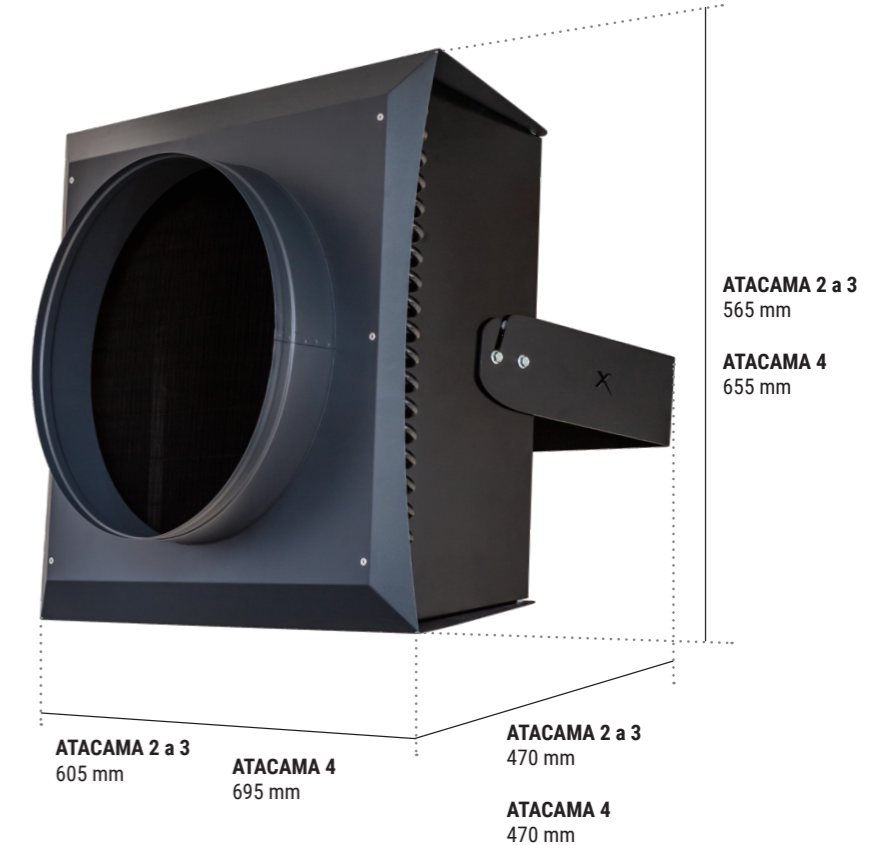
Standard wall-mounted heating units are usually used in halls with a height of 4 m and higher. The result of this solution is, that the air is heated in the whole area of the hall. But that is usually not necessary, because people are in areas with height up to two meters (assembly lines, picking zones in warehouses, etc....)

**The Atacama sleeve** allows you to heat up only the zones where the people work and move and other spaces are only tempered. This **saves significant costs of heating** of production and warehouse halls. But in addition, this solution allows you to use an Atacama Sleeve unit in spaces much smaller than they are suitable for standard heating units, such as services, workshops, service establishments, ... **ceiling height from 3m (!)**. Very interesting is use when heating greenhouses.

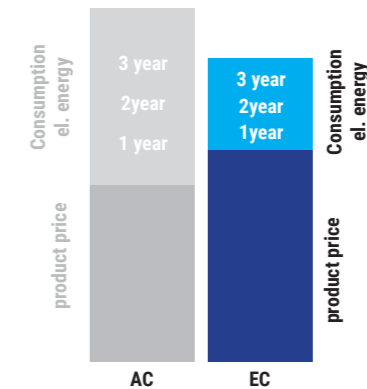
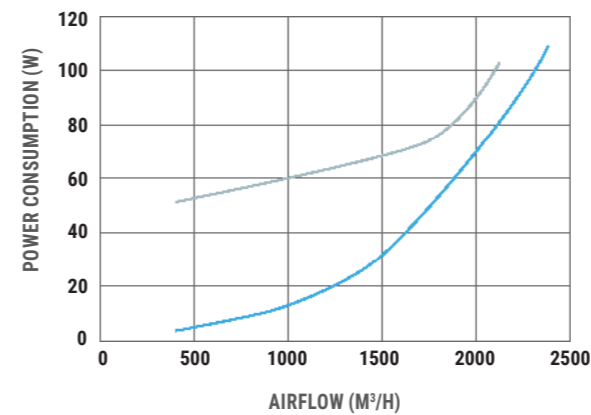
The Atacama Sleeve ventilates the area by flooding. Warm air is blown through small holes in the textile diffuser and its mass is directed down into the area, where persons stay, at a typical speed of **about 0.3 m/s**.

## Technical parameters of heating unit ATACAMA Sleeve

**Parameters of the exchanger:**  
 Max. operating temperature of the water is 120°C  
 Max. operating pressure is 1,6 Mpa  
 Connection dimensions - outer thread G 3/4".



### POWER CONSUMPTION COMPARISON AC ● EC ●



**Fan with EC motor**  
 Higher performance and low operating costs. Low noise level even with higher performance. Fluently controllable fan speed from 20% up to 100%.

		ATACAMA Sleeve 3		ATACAMA Sleeve 4	
		EC	EC	EC	EC
Fan type	-	EC	EC	EC	EC
Orientation service area (ceiling height 4m)	m2	0-500		0-1000	
Airflow	m3/h	3000	2600	4700	4400
Heating output range	kW	4 - 38	5 - 44	9 - 58	11 - 71
Rows of heat exchanger	-	2	3	2	3
Heat exchanger parameters		max. water temperature 120°C; max. operating pressure 1,6Mpa; Connection dimensions - outer thread G 3/4"			
Noise level **	dB(A)	51,7	50,3	52,1	51,6
Unit weight / with console***	kg	17 / 19,5	18 / 20,5	23 / 26	25 / 28
Water capacity in heat exchanger	dm3	1,4	2,1	2	3
Power supply	V/Hz	1 ~ 230/50-60		1 ~ 230/50-60	
El.fan power	W	184	189	359	379
Fan current	A	1,33	1,41	1,53	1,63
Rotation	rotation/min	1790		1310	
IP range	IP	54		54	
Accessories - textile air grill (length)	m	10 or 15m - other lengths according demand			
Sales code	-	ATA1-3-ECV2TH-0A0	ATA1-3-ECV3TH-0A0	ATA1-4-ECV2TH-0A0	ATA1-4-ECV3TH-0A0

\* Maximum distance of the air flow at an air speed of 0.5 m/s  
 \*\* Acoustic pressure in 5m, Q=2  
 \*\*\* weight of unit without water



more info



Xvent s.r.o.  
Poděbradská 289,  
53009 Pardubice  
Czech Republic

**+420 467 070 233**  
**office@xvent.cz**