



The Quick Manual will guide you through a quick installation of the product, but in no case could it replace the full operating manual. A complete operating manual is available on our website www.xvent.cz or can be downloaded using a QR code.

Use a smart device (mobile phone, tablet, etc.) equipped with this technology to read the QR code.



Installation and connection of the air curtain may only be carried out by a trained person with the appropriate authorization for the connection of electrical equipment, who has the appropriate tools at his disposal. During installation, all instructions and recommendations given in the Operation and Installation Manual for the WIND must be



Before starting any installation or maintenance work, it is necessary to turn off the power and secure the switch before turning it on again. When handling the air curtain, take its weight into account and observe safety.



Use of the Wind air curtain

- The Wind air curtain is designed to separate the indoor and outdoor environment with a stream of air. This function prevents the escape of indoor air from the indoor environment to the outdoor environment with open doors, gates, etc.... Another function of the air curtain with closed doors, gates is the possibility to heat the interior by hot air heating. When purchasing additional accessories - filter, the air curtain is also used to filter the air of the indoor environment.
- The air curtain is intended primarily for entrances to industrial halls, warehouses, sports
- The air curtain is designed for indoor covered and dry areas with an ambient temperature from +5 °C to +40 °C.
- The air curtain can also be used for environments with higher non-condensing humidity corresponding to the degree of protection IP54 and IP44, according to EN 60529 depending on the type of air curtain. However, a maximum of 80%. The air curtain can also be used in a corrosive environment C2, according to EN ISO 9223. The air curtain must not be operated in an environment with a risk of explosion and increased dust.
- Neither the manufacturer nor the supplier is liable for damage caused by incorrect use of the air curtain. The risk is borne by the user.
- The air curtain must not be operated during finishing construction activities, especially during activities in which excessive dust is

Technical parameters

Name	-	WIND-15				WIND-20				WIND-25			
		EC				EC				EC			
Motor type	-												
Airflow	m ³ /h	7750	6750	9000	7800	10350	9000	12000	10400	12900	11250	15000	13000
Heat output range	kW	-	6 - 63	-	8 - 69	-	8 - 86	-	11 - 94	-	10 - 107	-	13 - 117
Number of heat exchanger rows	-	-	2	-	2	-	2	-	2	-	2	-	2
Heat exchanger data		maximum operating water temperature 120 °C; maximum operating pressure 1.6MPa; pipe connection dimension G 1"											
Maximum horizontal blowing distance *	m	7	6,5	8	7	7	6,5	8	7	7	6,5	8	7
Maximum vertical blowing distance *	m	6	6	7	6	6	6	7	6	6	6	7	6
Noise level **	dB(A)	49,9	49	60,9	58,8	52	51	62,7	60,6	53,2	52,3	63,7	61,7
Unit weight ***	kg	42,8	54	44,4	56	47,7	57,8	53,9	64	71,1	83,5	78,6	91
The volume of water in the exchanger	dm ³	-	3,4	-	3,4	-	4,6	-	4,6	-	5,7	-	5,7
Power supply of the unit	V/Hz	1 ~ 230/50-60				1 ~ 230/50-60				1 ~ 230/50-60			
Motor output	W	317	337	511	517	423	450	687	708	528	562	822	853
Motor current	A	2,14	2,24	3,37	3,3	2,85	2,99	4,53	4,52	3,57	3,73	5,42	5,45
Speed	rpm	1370	1360	1750	1650	1370	1360	1750	1670	1370	1360	1750	1610
Protection Class	IP	54				54				54			
Sales Code	-	WIND-15A-EC50-QAQ	WIND-15A-ECV2-QAQ	WIND-15R-EC50-QAQ	WIND-15R-ECV2-QAQ	WIND-20A-EC50-QAQ	WIND-20A-ECV2-QAQ	WIND-20B-EC50-QAQ	WIND-20B-ECV2-QAQ	WIND-25A-EC50-QAQ	WIND-25A-ECV2-QAQ	WIND-25R-EC50-QAQ	WIND-25R-ECV2-QAQ

* Maximum air blowing distance at flow rate 3 m/s

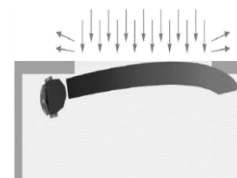
** Sound pressure level at 3m, Q = 2

*** unit weight, without water

Installation – general information

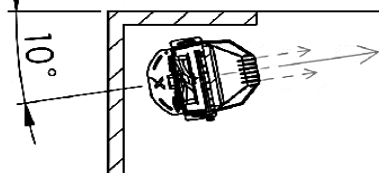


The air curtain must be positioned in the way, that the edge of exhaust of air curtain will be in direction to the wall aligned towards the door frame of the screened opening. The minimum distance between the side of the air curtain and the wall, the ceiling is 0.1 m and between the fan intake and the wall, the ceiling is 0.3 m (from flammable substances 0.5 m). The air curtain - the exhaust must always be turned at least 10 ° outwards from the opening. Otherwise, proper operation of the air curtain cannot be guaranteed. Local installation conditions must be taken into account.

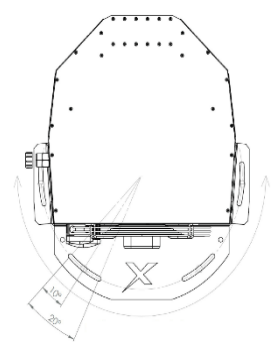


Vertical installation

- The air curtain must stand on a flat, cohesive and firm surface.
- The correct height of the air curtain must be at least 100 mm longer than the height of the opening. If the height of the opening is higher or equal to the air curtain height, you must attach another air curtain.
- Use the "WIND-HOLDER" base (accessory) to fasten the air curtain to the floor.

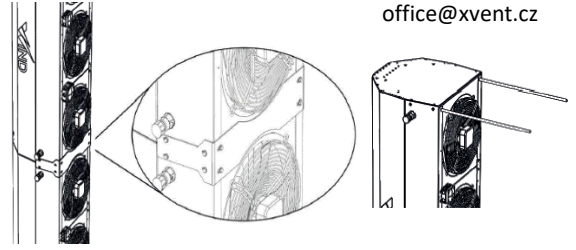


Anchoring the base (anchors, dowel screws must be diameter 10 mm. A washer must be placed under the head of the anchoring screw, nuts, for better weight distribution of the air curtain. The air curtain can be rotated ± 20 ° in the base.



Vertical installation – chaining of air curtains

- Use the "WIND-CONNECT" part (accessory) to connect another air curtain for chaining
- When chaining air curtains, it is necessary to additionally anchor each subsequent air curtain from the side to maintain the stability of the entire assembly.



The maximum height of chained air curtains must not exceed 6.5 m.

Horizontal installation

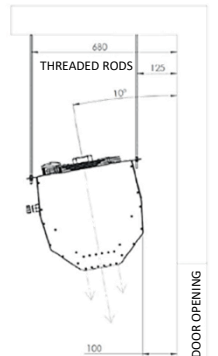
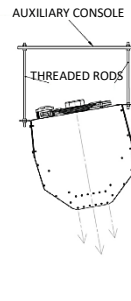
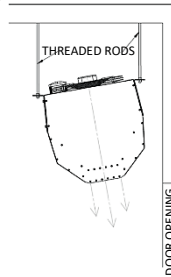
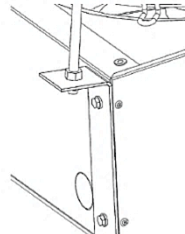
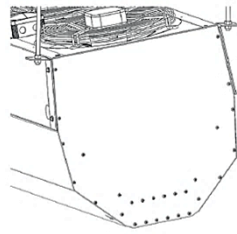
- Prepare suitable auxiliary anchoring structures (brackets, threaded rods, etc.) according to the weight of the air curtain, to the surface to which you will anchor the air curtain and according to the chosen method of suspension (ceiling, wall, etc.). Wind air curtain table of weights:

Series	Name	Weight of 1 curtain	Series	Name	Weight of 1 curtain	Series	Name	Weight of 1 curtain
		kg			kg			kg
WIND-15	WIN1-15A-ECS0-0A0	42,8	WIND-20	WIN1-20A-ECS0-0A0	47,7	WIND-25	WIN1-25A-ECS0-0A0	71,1
	WIN1-15A-ECV2-0A0	54		WIN1-20A-ECV2-0A0	57,8		WIN1-25A-ECV2-0A0	83,5
	WIN1-15B-ECS0-0A0	44,4		WIN1-20B-ECS0-0A0	53,9		WIN1-25B-ECS0-0A0	78,6
	WIN1-15B-ECV2-0A0	56		WIN1-20B-ECV2-0A0	64		WIN1-25B-ECV2-0A0	91

For the correct rotation of the screen 10 ° (towards the outside), the total length of the hinge (on the far side of the wall) must be 90 mm longer. Assumed lateral distance of the air curtain from the wall 100 mm. If the distance from the wall is greater, you must adjust the angle of rotation.



- For easier hanging, we recommend using "WIND-HINGE" hinges (accessories - 4 pcs in a package)
- Secure the screw connections against unintentional unscrewing with nuts.

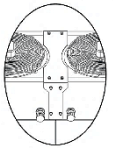


Horizontal installation – chaining of air curtains



Chained air curtains must not be joined before lifting to the working position. Only one air curtain for chaining is handled at a time. The air curtains will be connected only after they have been anchored to the wall and ceiling.

- The correct length of the chain assembly must be at least 100 mm longer on each side than the length of the screened opening.
- The air curtains chained side by side are using the "WIND-CONNECT" connector (accessory).



Electrical installation and wiring of the WIND air curtain



Appropriate wiring may only be carried out by persons qualified for this activity with a valid authorization and knowledge of the relevant standards and directives. Before starting any assembly work, it is necessary to turn off the power supply of the prepared electrical installation for subsequent recovery of the unit. The unit must be connected to the main power supply by the TN-S system (connected neutral) in accordance with the relevant regulations. The wiring diagrams on the product have higher priority than the diagrams in this manual! A cable of the strand type (licna) provided with a crimped terminal (sleeve) as well as a solid conductor (wire) in the range of cross-section from 0.2 to 1.5 mm² can be installed in the terminals. Push the wire into the terminals with adequate force so as not to damage the terminals.

