

How can I install controller Elementair-E

Elementair-E Mark I is designed for placement on the wall in the interior building environment. For proper operation, the controller must be located at the reference point. The residential zone approx. 1.5 m from the floor, must not be near the door, window openings in the area where the natural draft of air (draft) and heat sources. are generated.



How can I install controller Elementair-B

Elementair Mark I-B is designed for placement on the wall in the interior building environment.



more information



Xvent s.r.o.
Poděbradská 289,
53009 Pardubice
Czech Republic

+420 467 070 233
office@xvent.cz

www.xvent.cz



DESIGN

ECONOMIC

Controller Elementair-E Mark I Elementair-B Mark I

www.xvent.cz

ELEMENTAIR

Controller description Elementair-E Mark I

It is optimized for use to control the operation of air curtains and heating units with EC motors. The Elementair-E controller is used to continuously control the EC fan speed and room temperature. The regulator is next equipped with switching contact 1 ~ 230V AC and expanding contact 12V DC.



LED diode - signals operation of the whole controller.

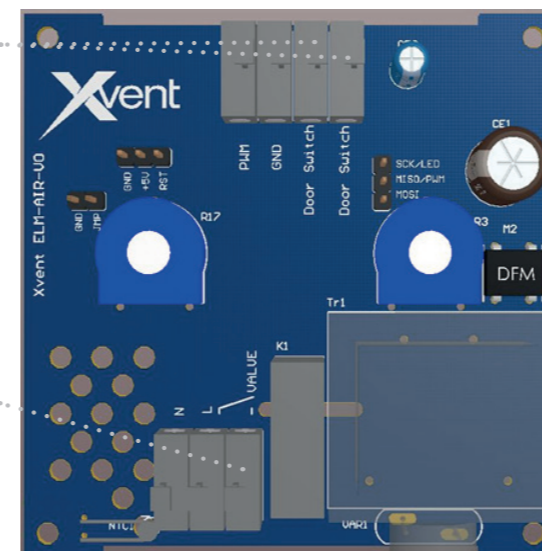
Rotary knob for infinitely variable speed control - allows continuous adjustment of the fan speed. The „OFF“ position allows the entire controller to be switched off.

Rotary knob for thermostat control - allows you to set the desired temperature in the range from 5 to 35 ° C. Position „OFF“ allows the room thermostat to be switched off.

Description of the rear side of the controller - connection terminals

Break contact - Door Switch
Description: contact designed for controlling the regulator by contact. Logic switching contact NC (normally closed). By default, the contact is clicked through (contact functionality is disabled). Contact load: 12V DC / 10mA

Switching contact - VALVE
Description: contact designed to control the exchanger armature servo. Contact breaks - controls only phase conductor that is interconnected with the supply phase to the controller. The neutral conductor must be connected directly from the power supply. Max current rating: 230V AC / 5A



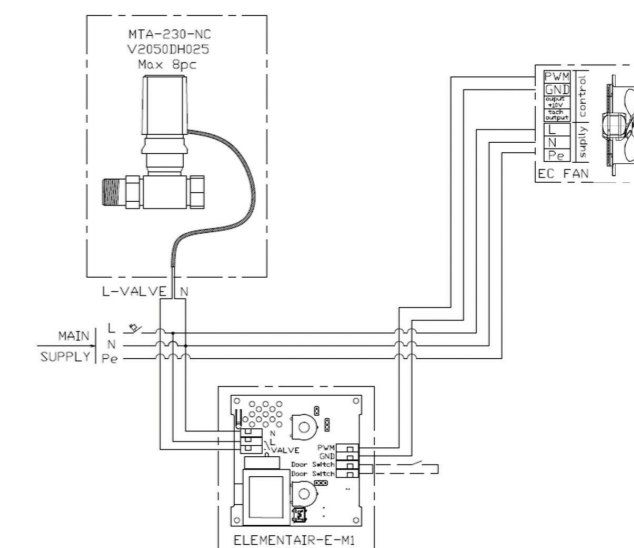
For maximum use of features The Elementair-E has contacts labeled „Door Switch“ and „Valve“.

The door switch contact is primarily designed for air curtains. This input enables the connection door contact, which means that curtain switches automatically from curtain mode to heating mode.

The „Valve“ contact controls the valve with electric drive. Using these two inputs is guaranteed maximum efficiency of connected devices.

Recommended electric connection of Elementair-E Mark I

For connection of wires, spring terminals with manual wire arrestment are used. Both strands (stranded wire) and solid conductors (wire) in cross-sectional areas from 0.5 to 1.5 mm² can be installed in the terminals.



Description of control logic:

- required temperature control (space heating) at the desired flow rate at the user's choice
- device runs at a preset speed by the user - when the desired temperature is reached, the device switches off.
- the valve with the actuator is open - the device is heating, the valve control is in the logic of switching with the fan (the device is off, the valve is closed).
- contact „Door Switch“ is connected (sensing of door, gate, window opening etc.):
 - open (eg door open) - the device starts at maximum speed, ignores the room thermostat setting. Heating is always fully - valve is open
 - closed (eg door closed) - device returns to thermostat control mode. This means that the unit returns to the speed set by the user and is controlled by the room thermostat according to the ambient and required temperature

Controller description Elementair-B Mark I

The controller is used for continuous control of EC motor speed with control input 0-10V DC without connection to the mains supply. Fan speed control is fluent thanks to rotatable button on the front control panel. For power-on information the driver is at the top front panel located signaling diode. The controller is powered DC voltage 10V DC from EC motor.

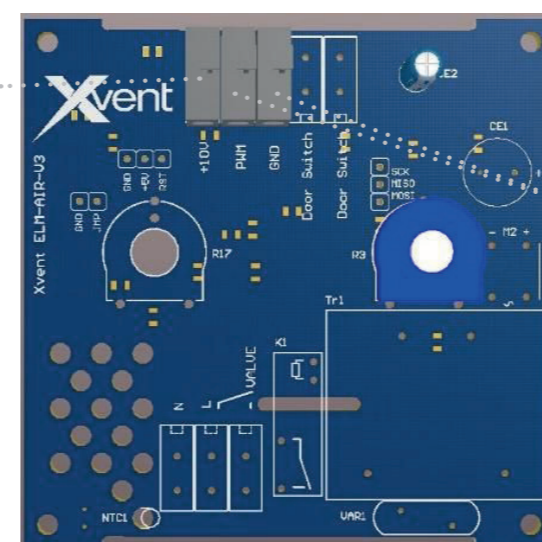


LED diode - signals operation of the whole controller.

Rotary knob for infinitely variable speed control - allows continuous adjustment of the fan speed. The „OFF“ position allows the entire controller to be switched off.

Description of the rear side of the controller - connection terminals

Controller power supply
Description: terminal + 10V designed for power supply of 10VDC controller
Max current rating of controller: 10 mA



Terminals for connection of EC fan
Description: terminals for connection of control voltage from EC fan PWM / 0-10VDC (+); GND with a resistance of 10kΩ. Control range 2-10VDC max 0,3mA

Recommended electric connection of Elementair-Basic Mark I

For connection of wires, spring terminals with manual wire arrestment are used. Both strands (stranded wire) and solid conductors (wire) in cross-sectional areas from 0.5 to 1.5 mm² can be installed in the terminals.

